

Private Collection of Pre-Columbian Artifacts – Sample Items

Contact: Kelly Hart: Olympia, Washington, kellykhart13@gmail.com 360-383-6470

Additional photographs and documentation available upon request.

This document presents a small selection of objects from a private family collection assembled in Mexico City between approximately 1975 and 1980. The collection includes roughly thirty cataloged artifacts such as masks, stone figures, and ceramic vessels, along with several dozen smaller associated objects including jewelry, beads, and miniature burial heads. The objects have remained in the family's possession in Arizona since acquisition. The family is now seeking professional evaluation and guidance regarding potential placement with institutions or qualified private collectors.

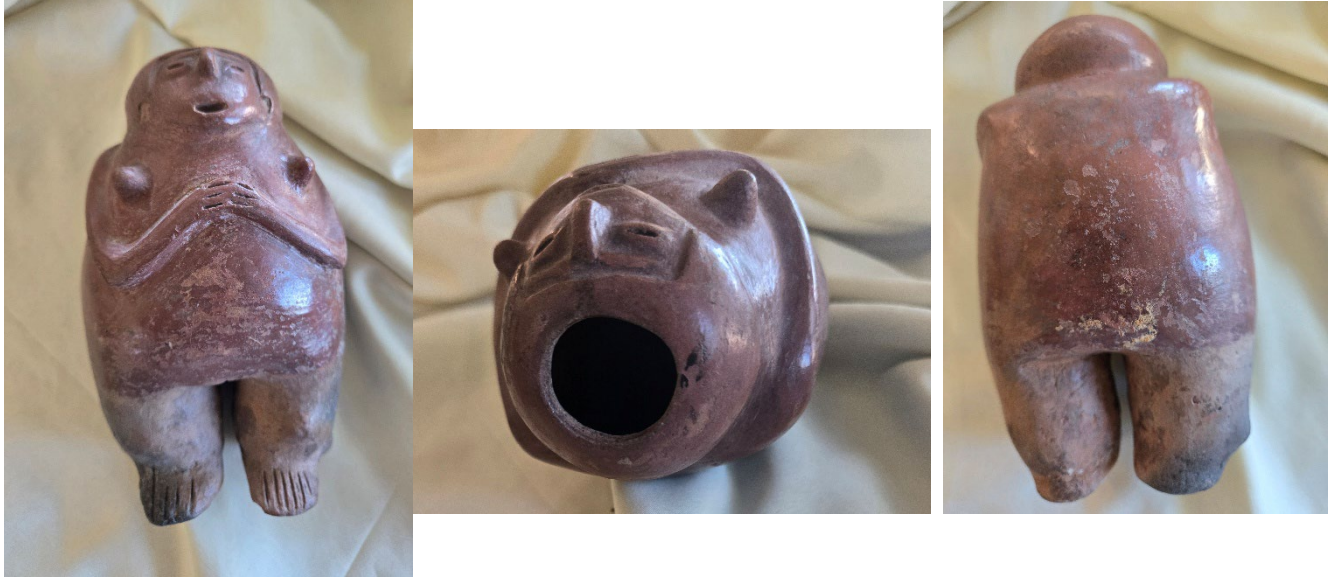
Research Note: Cultural identifications and date ranges are preliminary and based on visual comparison with museum collections and published examples. These descriptions should be considered provisional pending specialist review.



Item 1 — Mosaic Mask (Maya Style)

- **Material:** Jade tesserae on stone core
- **Culture:** Maya style (attributed)
- **Date:** ca. 1200–1520 CE
- **Dimensions:** 9 × 8 × 5 in
- **Views:** Front and back

Composite mosaic mask constructed from small jade elements set over a carved stone base.



Item 8 — West Mexican Terracotta Figurine (Hollow Ceramic Figure)

- **Material:** Terracotta
- **Culture:** West Mexico (Jalisco/Colima/Nayarit region, attributed)
- **Date:** ca. 300 BCE – 300 CE
- **Dimensions:** 6 × 4 × 3 in
- **Views:** Front, top, and back

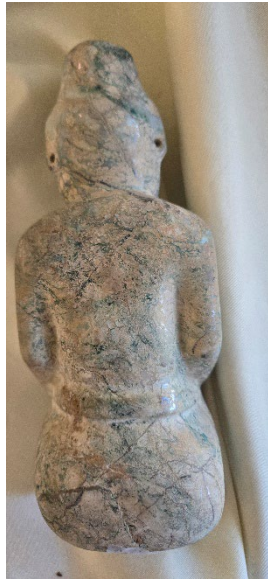
Hollow ceramic figure typical of West Mexican shaft tomb traditions. Surface treatment and form are consistent with known examples from the region.



Item 10 — Mezcala Stone Figure

- **Material:** Stone
- **Culture:** Mezcala culture, Guerrero (Mexico)
- **Date:** ca. 700 BCE – 230 CE
- **Dimensions:** 13 × 5 × 1.5 in
- **Views:** Front, side, and back

Elongated anthropomorphic figure with geometric simplification characteristic of Mezcala sculptural traditions.



Item 15 Olmec-style Jade Figure

Material: Greenstone (probable jade)

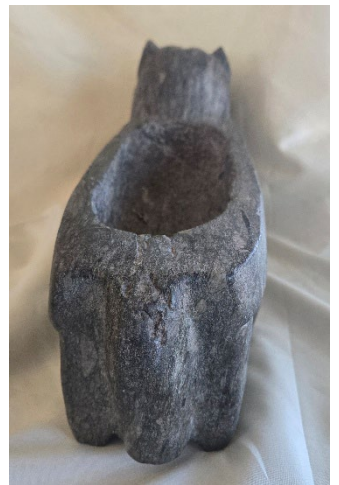
Culture: Olmec style (attributed)

Date: ca. 1200 – 500 BCE

Dimensions: 7 × 3 × 2 in

Views: Front, back and side

Standing anthropomorphic figure with simplified facial features and drilled elements. Stylistic attributes are consistent with early Mesoamerican jade carving traditions.



Item 25 — Zoomorphic Stone Vessel (Feline Form)

- **Material:** Stone
- **Culture:** West Mexico (attributed)
- **Date:** ca. 300 BCE – 300 CE (provisional)
- **Dimensions:** 7 x 14 x 4 in
- **Views:** Front, back and bottom

Carved vessel in the form of a feline figure, combining functional and sculptural elements. Zoomorphic vessels of this type are less common and appear in select regional traditions.



Item 26 — Carved Stone Ceremonial Vessel with Relief Decoration

- **Material:** Stone
- **Culture:** Mesoamerican (regional attribution uncertain)
- **Date:** Pre-Columbian (provisional)
- **Dimensions:** 8 x 12 x 7 in
- **Views:** Front, side 1, bottom, side 2

Substantial stone vessel featuring carved relief decoration. The iconography and form suggest ritual or ceremonial use; further specialist evaluation is recommended.